

©Great Lakes Cruising Club
405 Water Street, Suite 101
Port Huron, MI 48060-5469

Welcome to the **Great Lakes Cruising Club!** (GLCC)

Over 2500 U.S. and Canadian
cruising boaters across our five
Great Lakes ...

Dedicated to:

- *Sharing cruising information*
- *Promoting camaraderie*
- *Stewardship of Great Lakes resources*
- *Enhancing the cruising experiences of all*

Great Lakes Cruising Club...

Heritage



- Founded in 1934 to promote Great Lakes cruising
- Vision of providing a comprehensive Great Lakes cruising guide

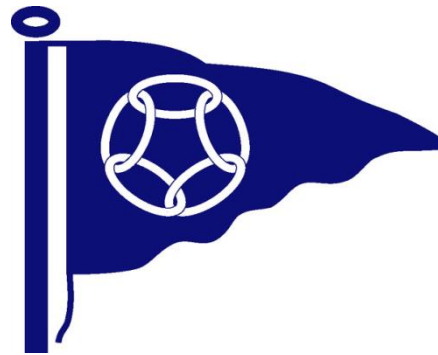
Today's Great Lakes Cruising Club

Cruising Information
Over 1200 Harbor Reports
~200 Port Captains

**Communications &
Sharing**

www.glcclub.com
Lifeline Magazine
Facebook

Education
www.GLCCSchool.com



Camaraderie
Rendezvous, Rallies, Annual
Meetings, Regional Dinners
... and more

Stewardship
Great Lakes Foundation

Cruising Information...

Today's GLCC Harbor Reports

Home

GLCC Harbor Reports

[View](#) [Edit](#) [Outline](#) [Track](#) [Access control](#)

GLCC harbor reports contain current information on all harbors and anchorages across the Great Lakes. To view area harbor reports, select from the following list of links or click on a region in the Great Lakes sketch below.

- [Lake Superior](#)
- [Lake Michigan](#)
- [North Channel](#)
- [Georgian Bay](#)
- [Lake Huron](#)
- [St. Clair & Detroit Rivers](#)
- [Lake Erie](#)
- [Lake Ontario](#)
- [Connecting Waterways](#)
- [Appendix](#)

CHS Chart Excerpts have been produced by The GLCC based on Canadian Hydrographic Service Charts and/or Data, pursuant to CHS Direct User License No. 2010-1208-1260-0. For information on the Direct User License, see harbor report A-1, General Information.



Harbor Reports Going

Active forum topics

- [1st Webinar Starts October 25th](#)
- [Mackinac Race Tragedy Report](#)
- ["Active Index" PDFs](#)
- [First 2011-12 GLCC School Webinar Starts October 25th!](#)
- [SPOT personal tracker](#)

more

Site Management

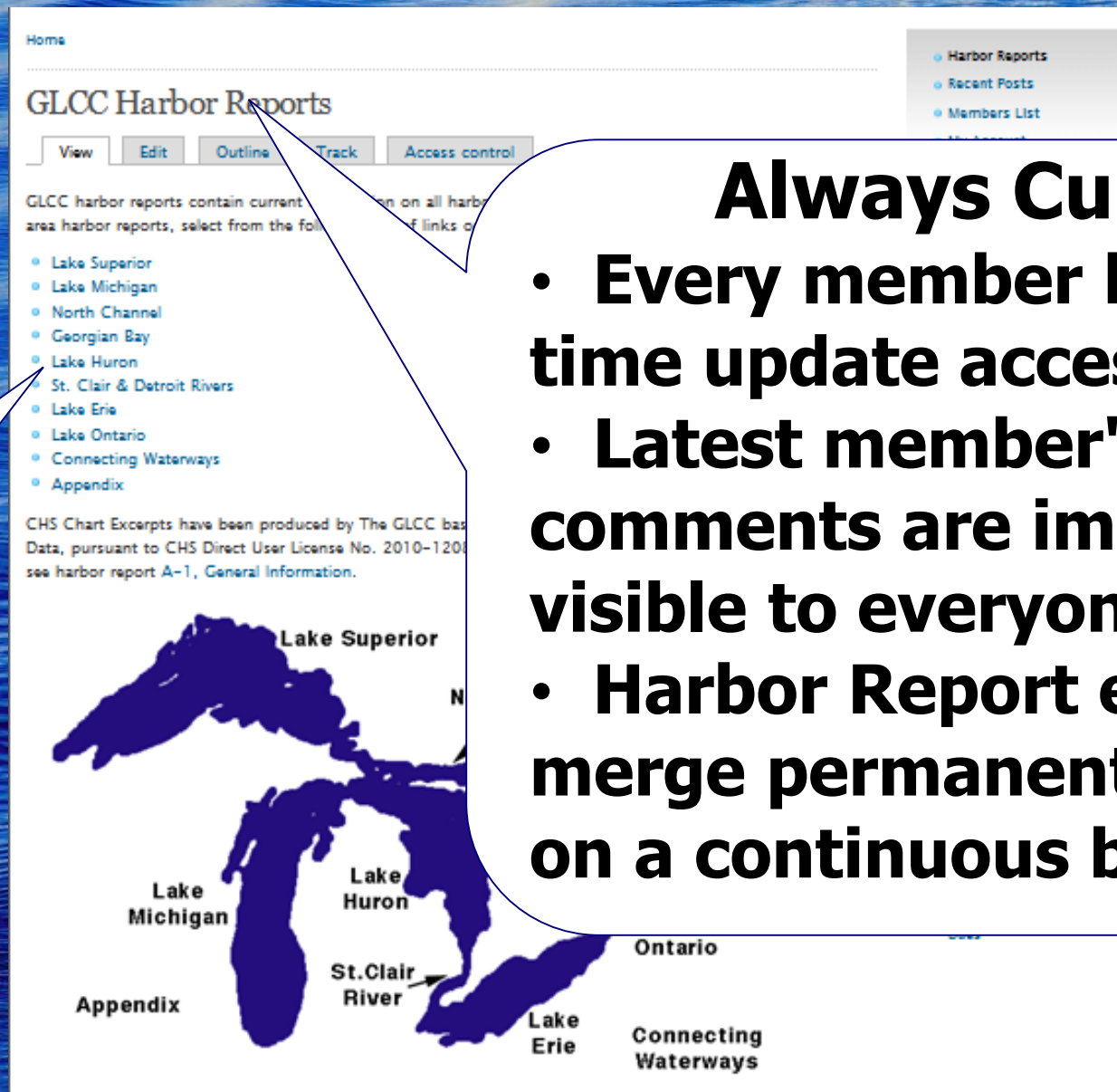
- [Create Site Content](#)
- [Administer](#)

- [Events & Ship Store](#)
- [Harbor Reports](#)
- [Pay Yearly Membership Dues](#)

**Over 1200
Reports**

Cruising Information...

Today's GLCC Harbor Reports



Home

GLCC Harbor Reports

View Edit Outline Track Access control

GLCC harbor reports contain current information on all harbor area harbor reports, select from the following links:

- Lake Superior
- Lake Michigan
- North Channel
- Georgian Bay
- Lake Huron
- St. Clair & Detroit Rivers
- Lake Erie
- Lake Ontario
- Connecting Waterways
- Appendix

CHS Chart Excerpts have been produced by The GLCC based on CHS Chart Data, pursuant to CHS Direct User License No. 2010-1201. For more information see harbor report A-1, General Information.

Lake Superior

Lake Michigan

Lake Huron

St. Clair River

Lake Erie

Ontario

Connecting Waterways

Appendix

**Over 1200
Reports**

Always Current

- Every member has real-time update access
- Latest member's comments are immediately visible to everyone
- Harbor Report editors merge permanent changes on a continuous basis

Exploring the North Channel... a Chart View

North Channel

[View](#) [Edit](#) [Outline](#) [Track](#) [Access control](#)

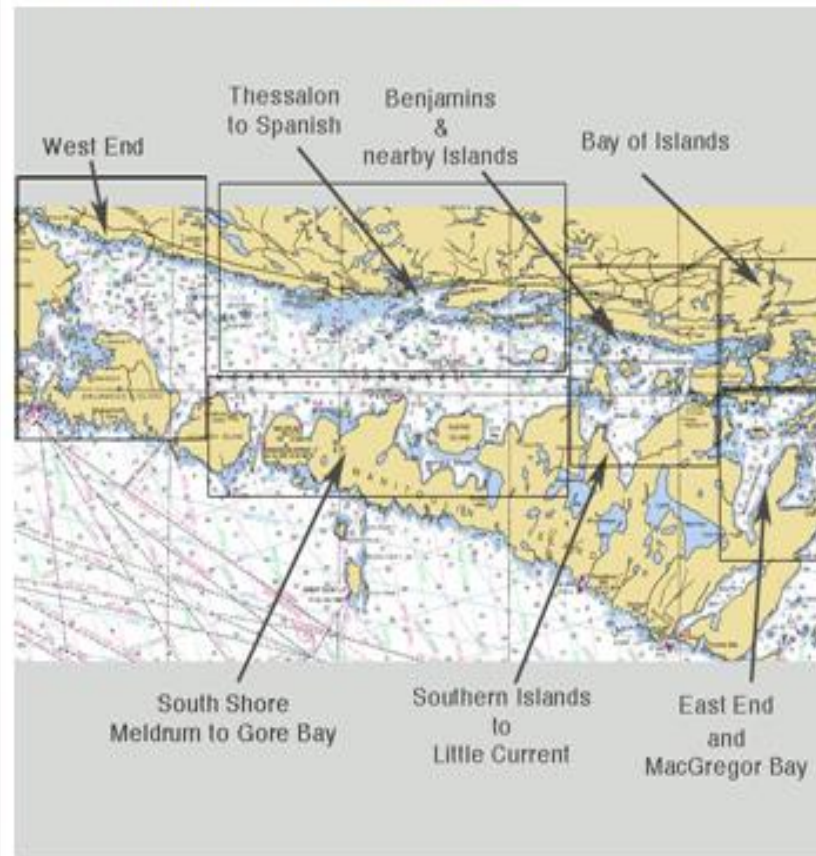
 [dvidor](#) April 2, 2011

[Add child page](#) [Printer-friendly version](#) 2622 reads

For newcomers, [read or download "An Ideal North Channel Cruise..."](#)

To view the harbor reports, roll the mouse over the sketch below and click on an area, or click on the area's name in the right-hand panel...

CHS Chart Excerpts in these reports have been produced by the GLOO based on Canadian Hydrographic Service Charts and/or Data, pursuant to CHS Direct User License No. 2010-1208-1260-0. For information on the Direct User License, see harbor report A-1, [General Information](#).



- [NC-0 Cruising the North Channel](#)
- [West end of the North Channel](#)
- [South Shore-Cockburn to Gore Bay](#)
- [North Shore-Ilexation to Spanish](#)
- [Kagawong to Little Current to Baman Islands](#)
- [Benjamins and Nearby Islands](#)
- [Bay of Islands Area](#)

North Channel

- [NC-0 Cruising the North Channel](#)
- [West end of the North Channel](#)
- [South Shore-Cockburn to Gore Bay](#)
- [North Shore-Ilexation to Spanish](#)
- [Kagawong to Little Current to Baman Islands](#)
- [Benjamins and Nearby Islands](#)
- [Bay of Islands Area](#)
- [East end of North Channel](#)

Member Links

- [Harbor Reports](#)
- [Recent Posts](#)
- [Members List](#)
- [My Account](#)
- [Events](#)
- [Lifetime Issues](#)
- [Membership Benefits](#)
- [Photo Gallery](#)
- [Policies & Guidelines](#)

Who's Online

There are currently 2 users online.

- [JubileeBill](#)
- [rolven](#)

Active Forum Topics

- [The GLOOSchool](#)
- [2012 Rendezvous, Perry Sound, Ontario](#)

Satellite View

Benjamins and Nearby Islands

View

Edit

Outline

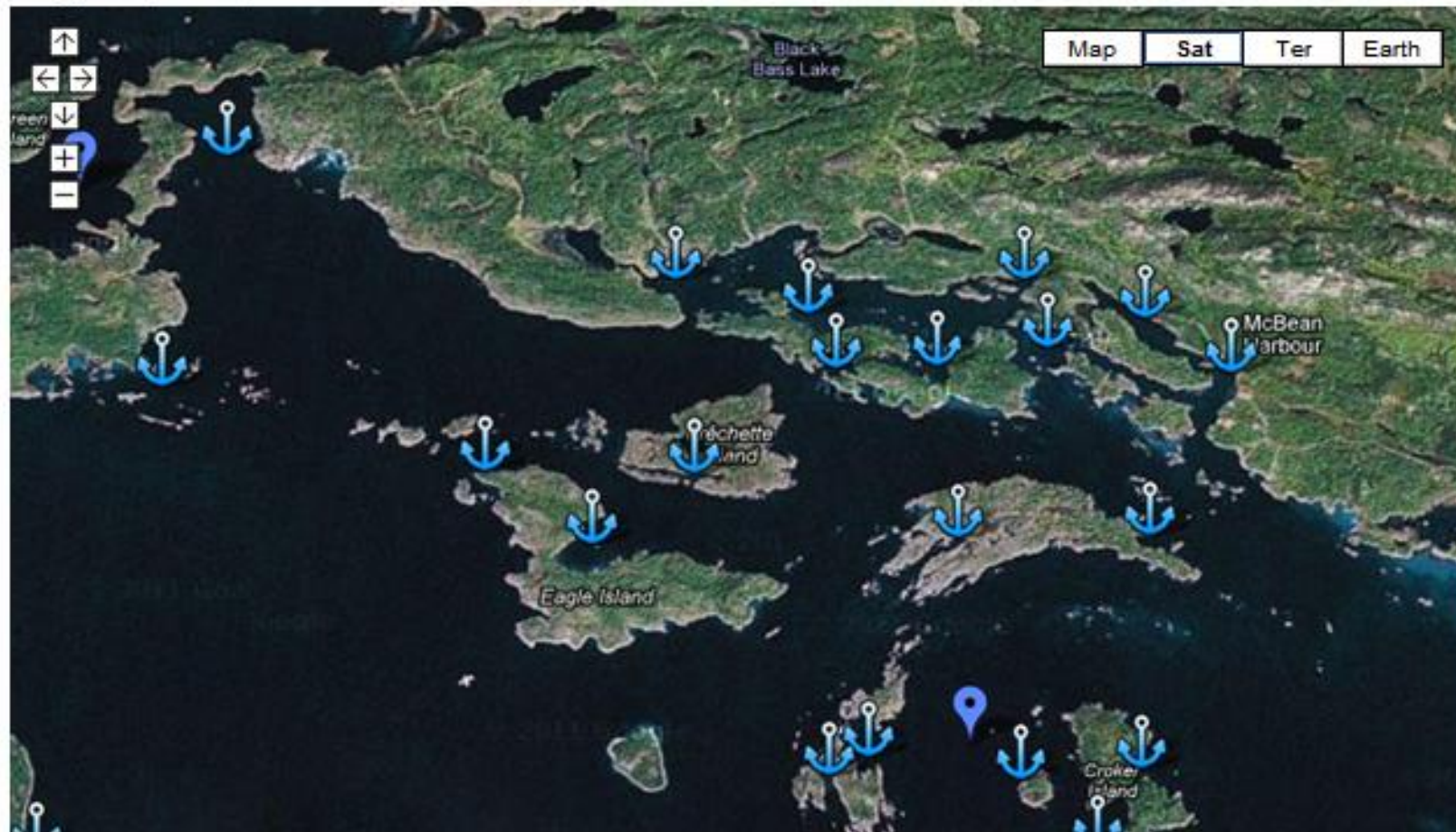
Track

Access control

 dweller -  May 1, 2008

[Add child page](#) [Printer-friendly version](#) 3451 reads

The Benjamins Island area and Islands along the north shore. Use the North-Channel menu on the right or the Google Map below, to select a harbor report to view.



Satellite View... with Live Links

Benjamins and Nearby Islands

View

Edit

Outline

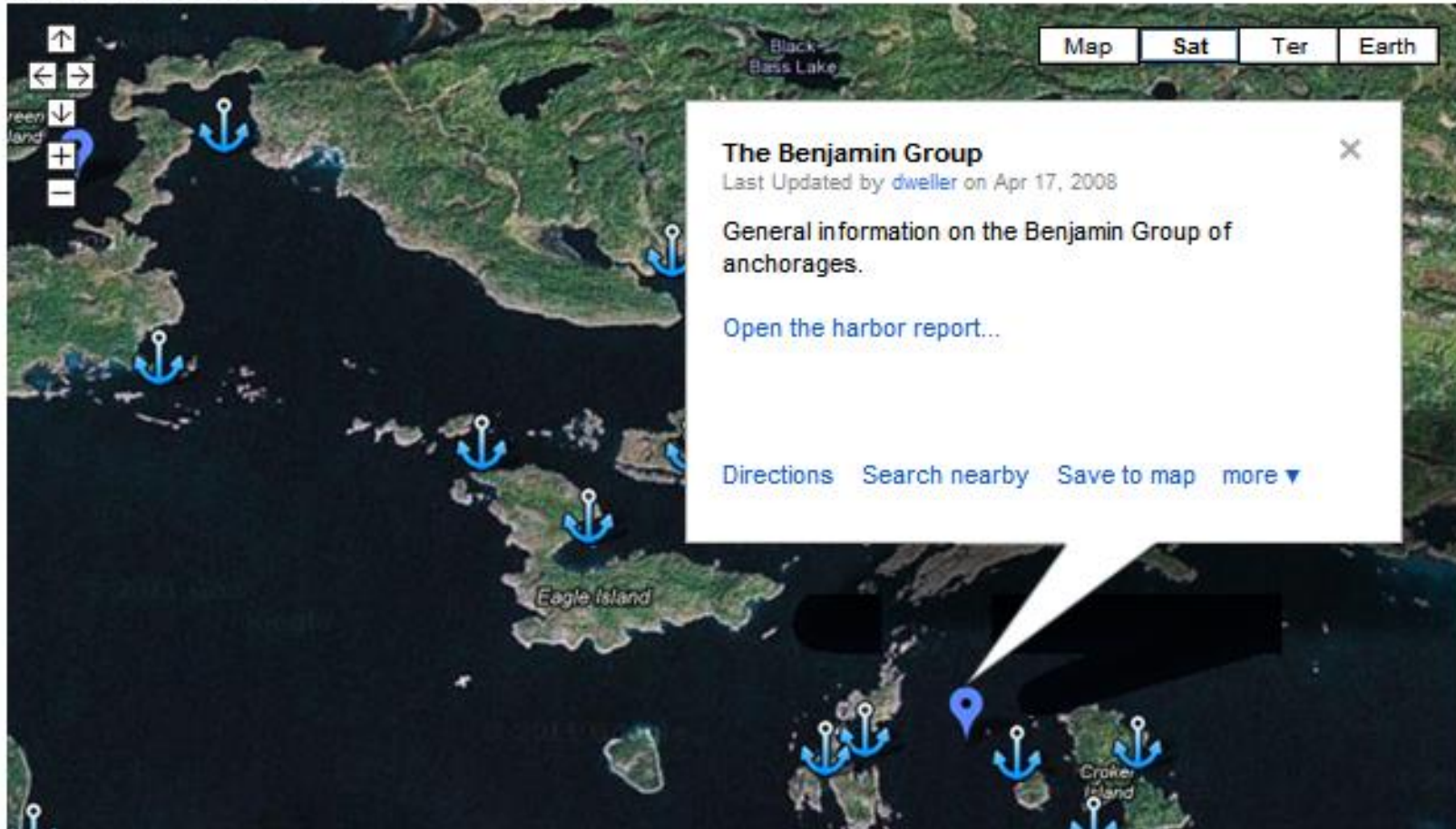
Track

Access control

 dweller -  May 1, 2008

[Add child page](#) [Printer-friendly version](#) 3449 reads

The Benjamins Island area and Islands along the north shore. Use the North-Channel menu on the right or the Google Map below, to select a harbor report to view.



The image shows a satellite map of the Benjamin Group area, including islands like Eagle Island and Croker Island. A popup window titled "The Benjamin Group" is overlaid on the map. The popup contains the following text:

The Benjamin Group ✕
Last Updated by [dweller](#) on Apr 17, 2008

General information on the Benjamin Group of anchorages.

[Open the harbor report...](#)

[Directions](#) [Search nearby](#) [Save to map](#) [more ▾](#)

The map interface includes navigation controls on the left (up, down, left, right arrows, zoom in/out) and map style controls on the right (Map, Sat, Ter, Earth). Labels on the map include "Black Bass Lake", "Eagle Island", and "Croker Island".

Cruising Information and Narratives

NC-23 The Bay of the Benjamins

From Benjamins Bay to...

[Little Current \(NC-17\)](#), 19 miles SE
[Croker Island \(NC-22\)](#), 1.75 miles E

[Little Detroit \(NC-38\)](#), 7 miles NW
[Gore Bay \(NC-14\)](#), 14 miles SW

Benjamins Bay quick reference...

Type of harbor	scenic anchorage	Services	none
Location	L 46° 05.5' N; λ 082° 15.2' W	Dockage	no
Charts	2207, 2299, 2257, GLCC #2	Anchorage	yes
Phone area code	n/a	Population	cottagers

Introduction

The two Benjamin Islands form one of the most delightful spots in this area for the adventurously inclined cruiser. Both islands abound in coves and gungholes, particularly this beautiful bay between the two Benjamin Islands. A climb to the top of the mount on North Benjamin provides a spectacular view of all the surrounding islands and the waters between them.

The northwest shore of North Benjamin and the northeast shore of South Benjamin show ample evidence of heavy glacial erosion in the form of long parallel grooves in a NE-SW direction, which is the direction the ice moved in the North Channel area during the Ice Age.



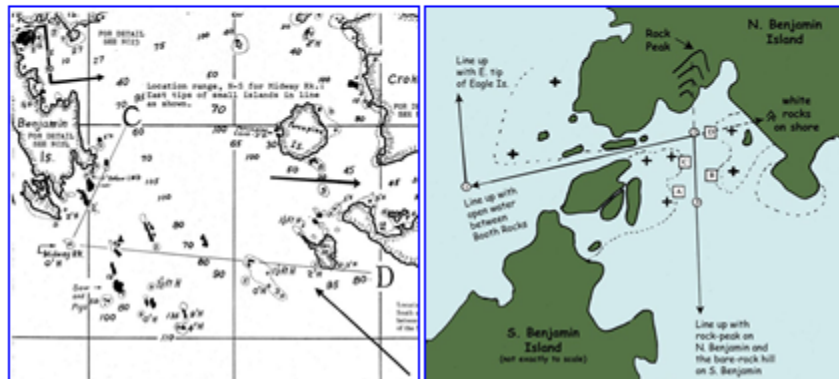
Navigation Details...

Approaches

From the east, see the approaches to Croker Island ([NC-22.5](#)) and the Benjamins Sailing Directions ([NC-22](#)). From Croker, the entrance to the bay is clear and open.

From the southwest, pass 100 feet south of Midway Rock (see GLCC chart 2 for Midway Rock— $46^{\circ} 04.453' N$; $082^{\circ} 15.017' W$ (access chart 2 at the end of report [NC-22, Benjamin Group](#)) and set a course in the center between the most northerly rocks of the Sow and Pigs and the most southerly rocks off South Benjamin Island. There is a minimum depth of 10 feet through this channel.

From the north the best approach is to pick up the east tip of Eagle Island. From here a course of $171^{\circ} T$ heads directly for the lowest spot in South Benjamin Island (see air view with this report, and GLCC Chart 2). This course will safely clear Fox Rock, 3 feet high, and Booth Rocks, to the northwest of South Benjamin.



(click on the sketches for larger views...)

When you have almost reached the north tip of South Benjamin, turn sharply to port, and line up the channel between North and South Benjamin, heading for a white quartz rock outcrop on the shore of North Benjamin. There is a rock (2 feet high at LWD) in the water out front of this quartz outcrop.

Make a right-angle (almost 110°) turn to the south when in line with the "rock peak" on North Benjamin and the long, bare rock that extends from the water to the top of South Benjamin Island. This course maintains a minimum of 12 feet. **Do Not Stray** from this course because there are 4 very dangerous rocks on either side of this channel. As always in narrow channels, proceed with caution and a bow "watcher" if possible.

This very spectacular passage—known as the "back door"—brings you into Benjamins Bay, between North and South Benjamin, on the east side of the islands. Proceed south into the anchorage.

Caution: once you turn south into the anchorage, the underwater rocks are of concern especially to deep-draft boats. These are large sloping rocks (similar to what is on shore on South Benjamin) and you need to pass over the deepest part of the slope. A bow-lookout should be able to direct you through deep water past them. Follow the courses shown on the air view and chart sketch and 12 feet can be held. But proceed slowly always!

The waypoints following are referenced to the chart sketch above, taken by Harold Darch and Mel Wallbank.

Waypoints for the "CUT":	Danger waypoints marking channel width:
1. $46^{\circ} 05.391' N$ $082^{\circ} 15.617' W$	A. $46^{\circ} 05.408' N$ $082^{\circ} 15.241' W$
2. $46^{\circ} 05.476' N$ $082^{\circ} 15.222' W$	B. $46^{\circ} 05.428' N$ $082^{\circ} 15.183' W$
3. $46^{\circ} 05.398' N$ $082^{\circ} 15.209' W$	C. $46^{\circ} 05.443' N$ $082^{\circ} 15.234' W$
	D. $46^{\circ} 05.479' N$ $082^{\circ} 15.185' W$

GLCC Port Captains



Over 200 Regional Cruising Experts

There when and where
you need them



With local knowledge to
supplement the Harbor Reports



Your first point of local
contact with the club



Communications and Sharing...

www.glcclub.com



*Welcome to the website
of the Great Lakes Cruising Club.*

Office Phone: 810-984-4500

E-mail: glcclub@att.net

[Site map](#)

[Home](#) [About](#) [Join The GLCC](#) [Discussion](#) [GLCC School](#) [Help](#) [Foundation](#) [Contact Us](#) [Current Member Sign In/Register](#)



The Great Lakes Cruising Club

Use this website to learn more about the benefits of becoming a member of the Great Lakes Cruising Club. Access over 1,100 Harbor Reports, learn more about upcoming events, join discussions, and more as a member. Sign up is quick, easy, and you can do it online!

[Learn More](#)

WELCOME

Welcome to the website of the **Great Lakes Cruising Club**. Look around and you will find **harbor reports** for 1,100 ports and anchorages throughout the Great Lakes, **discussions** of Great Lakes issues, places to post boat and cruising photos, etc.

Note that major portions of the web site are limited to members of the GLCC. If you are not a member, consider joining us- just click on "Join the GLCC" in the menu bar above and you will be on your way to our exclusive membership benefits. [Read more...](#)

GLCC School

Webinars, virtual classrooms, and more, from the comfort of your own home.

[READ MORE >](#)



www.glcclub.com ... The Great Lakes Boater's Information Resource

Learn
about the
GLCC

Discussion
Forums

Great Lakes
Foundation
Information

Home About Join The GLCC Discussion GLCC School Help Foundation Links Contact Us

Join the
Club!

Access
GLCCSchool

Links to Other
Great Lakes
Information

www.glcclub.com ... Member Access

- View, download, print and or update Harbor Reports
- See event information and register
- Access on-line *Lifeline*
- Learn about membership benefits
- Access club directory
- Follow club business

Member Links

- ▶ **Harbor Reports**
- ▶ **Recent Posts**
- ▶ **Members List**
- ▶ **My Account**
- ▶ **Events**
- ▶ **Lifeline Issues**
- ▶ **Membership Benefits**
- ▶ **Photo Gallery**
- ▶ **Policies & Guidelines**

www.glcclub.com ... Member Access

- View, download, print and or update Harbor Reports
- See club status and register
- Access club information
- Learn about membership
- Access membership benefits
- Follow club business

Member Links

**All in a Dynamic,
Real-time,
“WIKI” Structure**

- ▶ Current Club Issues
- ▶ Membership Benefits
- ▶ Photo Gallery
- ▶ Policies & Guidelines

Communications and Sharing...

facebook

Social Media for the Great Lakes Cruising Boater

- Open to all
- View and post
- Topics of interest to cruisers
- Regional events

The image shows a screenshot of the Facebook page for the Great Lakes Cruising Club. The page header includes the club's name, a search bar, and navigation links for Bill, Home, and Find Friends. The main content area is divided into several sections: a 'Page' tab with sub-tabs for Activity, Insights, and Settings; a post by Joyce Berdie, Coleen Jones Austin, and 23 others; a 'Find New Customers' section with a 'Promote Page' button; an 'ABOUT' section with a description of the club's 80th anniversary and a website link; and a 'POSTS TO PAGE' section with two recent posts. The first post is by Dana Kraska Liss, sharing a photo of Len Nowak at the Chicago Boat Show. The second post is by Cindy Short Badley, announcing a dinner and show at the Chicago Boat Show. A second post by the club, shared by Steve Reinecke, is also visible, titled 'Signing up a new member at the Toronto Boat Show. — at Toronto Boat Show.' Below the Facebook screenshot is a photograph of a booth at a boat show. The booth features a blue tablecloth, a television, and a banner for the Great Lakes Cruising Club. A man in a blue shirt is standing behind the table, and a woman is standing next to him. A blue flag with the club's logo is hanging from the ceiling.

Great Lakes Cruising Club

Page Activity Insights Settings

Joyce Berdie, Coleen Jones Austin and 23 others like this

Great Lakes Cruising Club shared a link
Posted by Arlene Oakland (??) · January 19 · 🌐

Every Great Lake except Superior has more ice than last year!

Great Lakes ice cover: How does this year compare to last winter? 🌐
www.mlive.com

The recent cold has caused ice to increase on the Great Lakes. So how does the ice coverage on the Great Lakes today compare to this date last year?

Great Lakes Cruising Club
Posted by Steve Reinecke (??) · January 18 · 🌐

Signing up a new member at the Toronto Boat Show. — at Toronto Boat Show.

ABOUT >

📌 Celebrating 80 years promoting and enhancing cruising on the Great Lakes. Join today, for local Cruising knowledge, Harbor Reports, Social Events!

🌐 <http://glcclub.com/> Promote

POSTS TO PAGE >

Dana Kraska Liss
January 18 at 2:07pm 🌐

📷 Sharing a photo of Len Nowak talking to a potential member at the Chicago Boat Show!

Unlike · Comment 👍 1

Cindy Short Badley
January 16 at 10:06am 🌐

📷 Chicago: Come in for Dinner and a Show! The Strictly Sail Chic... See More

📌 Celebrating 80 years promoting and enhancing cruising on the Great Lakes. Join today, for local Cruising knowledge, Harbor Reports, Social Events!

Like · Comment · Share

Club Communications and Sharing ... *Lifeline Magazine*



- Quarterly
- Accessible OnLine (free)
... or hard copy (fee)
- Information on:

- Club Activities
- Upcoming Events
- Cruising Stories
- Great Lakes
Information of Interest

Education



Education ... the Great Lakes Cruising Club School

Internet Based

Affordable

**Over 40
Classes
Each Year**



**Hundreds
of
Students**

**Cruising Guides,
Seamanship Skills,
Maintenance, ... and more**

Great Lakes & Tributaries Locks

Sault St. Marie

- Two parallel US Locks + planned superlock
- One parallel Canadian Lock
- 21' Elevation

St. Lawrence Seaway

- Seven Locks
- 95 Miles
- 225' Elevation

Trent Severn

- Lake Ontario to Georgian Bay
- 41 Locks
- 208 Miles
- 590' Elev. (Balsam Lake)

Chicago River and Sanitary Canal

- Leveling Lock

Welland Canal

- Niagara Escarpment
- Eight Locks
- 24 Miles
- 326' Elevation

Erie Canal

- 36 Locks; 565'



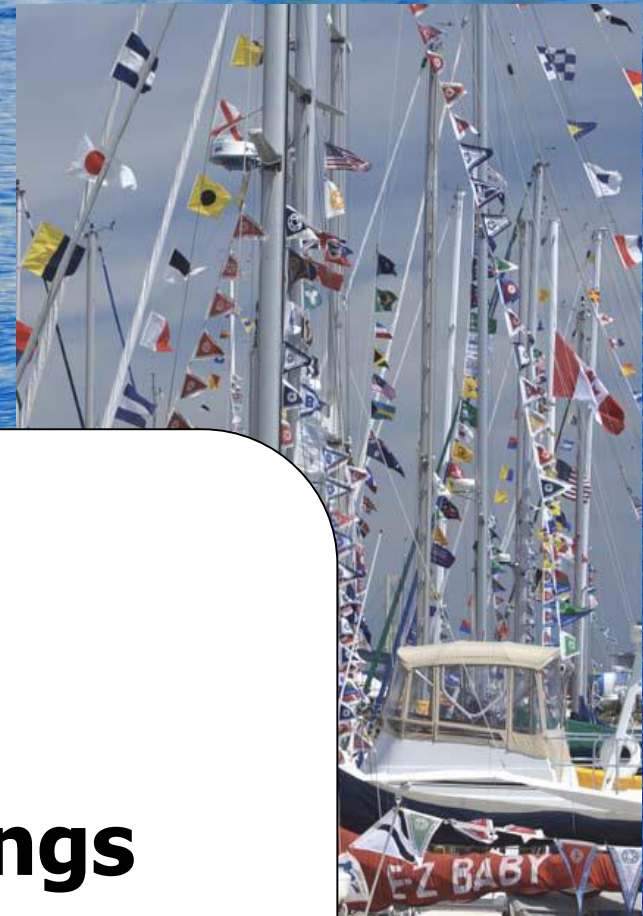
Guest List (22)

- Bill Rohde
- TOM THEISE.
- Allen Murph
- Barry Yano
- Bob Mersere
- Bonnie Dah
- Cynthia Rox

Chat

- at Port Colborne?
- Mark Lifter: It is a port of entry
- Cynthia Rogers: Are 3 upbound required in all GL

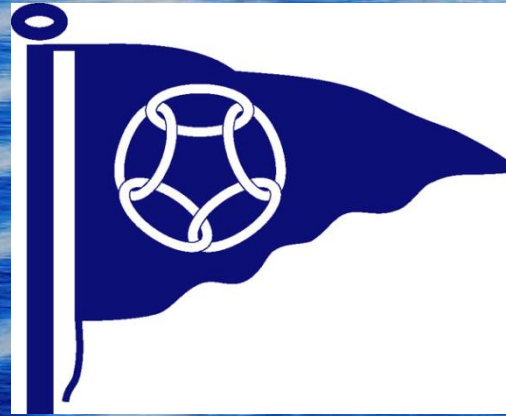
And More ... Camaraderie



- **Annual Rendezvous**
- **Regional Rallies**
- **Annual Meeting**
- **Regional Dinner Meetings**
- **Winter Break**
- **... and many, many informal flotillas and gatherings**



Great Lakes Stewardship ... The Great Lakes Foundation



Dedicated to preserving the richness of wilderness cruising areas of the Great Lakes, and to fostering the art and science of cruising”

- 501(c)(3) Charitable Organization
- Over \$150,000 in Grants to Date

So ... Why Join the GLCC???

- If you're planning to cruise the Great Lakes
 - Most extensive cruising information anywhere
 - Over 200 Port Captains for local knowledge and advice
- For fellowship with over 2500 like minded Cruisers
 - Rendezvous, rallies, dinners & impromptu events
- Access to negotiated discounts and other benefits
 - Boat Insurance, Education, Services, ...
- Stewardship
 - Helping maintain and enhance our Great Lakes Resources

Join the Great Lakes Cruising Club

It's just a few clicks away:

- ✓ Go to www.glcclub.com
- ✓ Click "Join the GLCC" and read about our membership benefits
- ✓ Click "Join Now" or "Download Membership Form"
- ✓ Fill out on-line and click, or print and fill out off-line and mail
- ✓ Payment by credit card
 - ✓ One Time \$90 Initiation Fee
 - ✓ \$110.00 Annual Dues (single or joint – couple)

Come Join Us!



We'd Love To See You
as Members of the
GLCC!